



FEATURES:

- Reflow solderable.
- To provide both momentary operation by lever and center actuation.

MATERIAL:

- Cover: Stainless steel
- Base: UL94V-0 PPS Thermoplastic
Color: Brown
- Stem: UL94HB Nylon Thermoplastic
Color: Gray, Black
- Contact: Phosphor bronze with silver cladding at contact surface.
- Terminal: Phosphor bronze with silver cladding at contact surface.
- Spring: SWP or SUS.

SPECIFICATION

MECHANICAL

- Mechanical Life: 100 000 operations cycles
- Operation Force: (A) Force on return actuator
(A) 40 ± 20 gf
(B) Force on center push direction
(B) 150 ± 50 gf
- Operation Temperature Range: -10°C to $+70^{\circ}\text{C}$
- Storage Temperature Range: -25°C to $+85^{\circ}\text{C}$
- Vibration Test: MIL-STFD-202F METHOD 201A.
Frequency: 10-55-10Hz/1 minute
Directions: X,Y,Z, three mutually perpendicular directions.
Time: 2 hours each direction.
High reliability.
- Shock Test: MIL-STD-202F METHOD 213B
CONDITION A.
Gravity: 50G (peak value), 11 msec
Direction and times: 6 sides and 3 times in each direction.
High reliability.

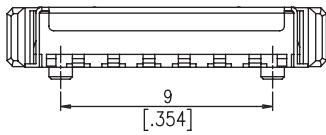
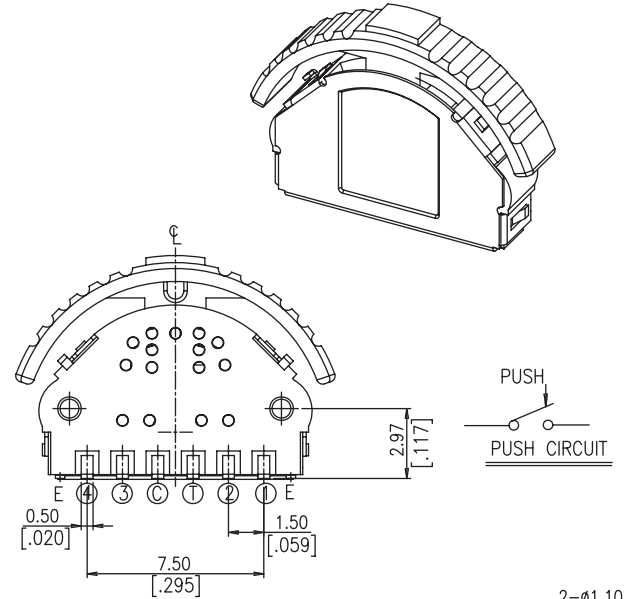
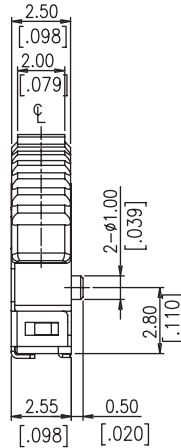
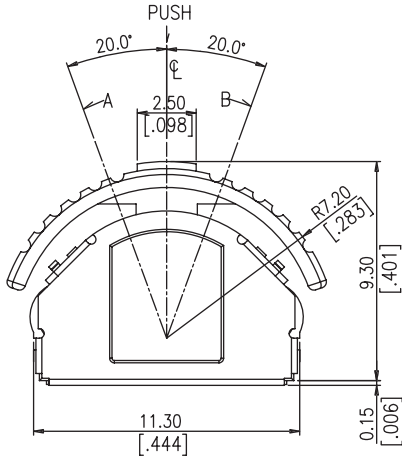
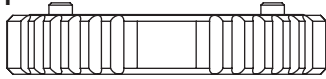
ELECTRICAL

- Electrical Life: 100 000 operations cycles
5VDC, 10mA
- Non-Switching Rating: 100mA, 50VDC
- Switching Rating: 10mA, 5VDC
- Contact Resistance: (a) 100m Ω max at initial
(b) 200m Ω max. after life test
- Insulation Resistance: 100M Ω min at 100VDC
- Dielectric Strength: 100VAC/1 minute.
- Capacitance: 5pF max.
- Circuit: 1 pole 1 throw.

Packaging:

Part Number	Number per Reel
SPLSJ	1000
SPLSJ-GA	900

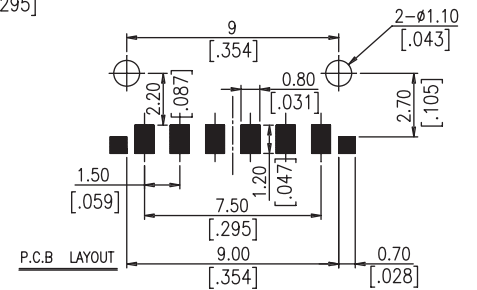
SPLSJ-T



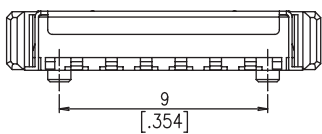
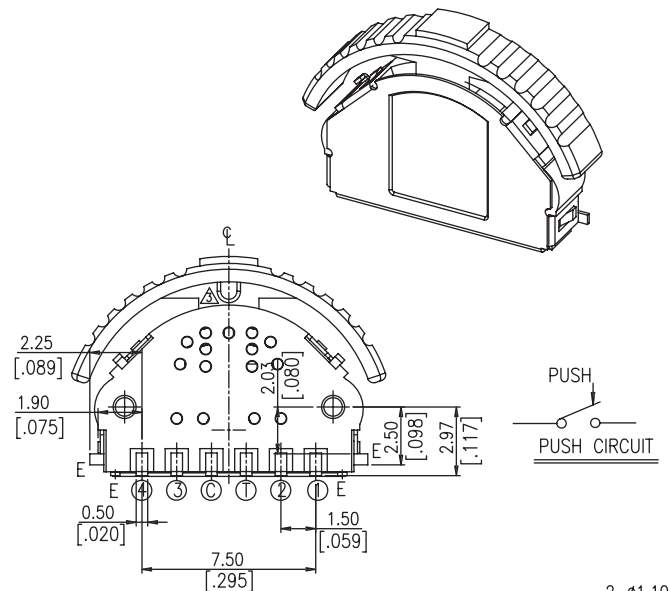
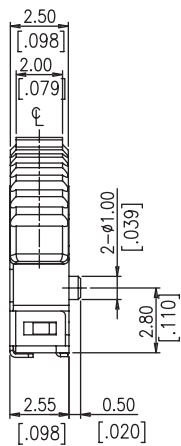
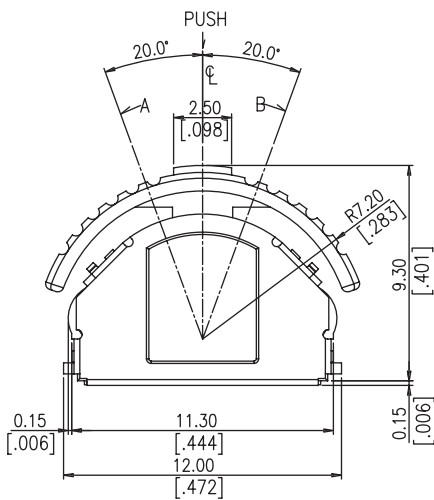
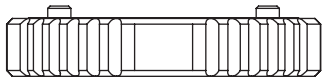
ANGLE	20°	A		B		20°
		(16°)	(8°)	(8°)	(16°)	
TERMINAL NO.						
①	■					
②	■					
③						■
④						■
C	■					■

* E : ERTHING TERMINAL
* ■ : ON POSITION

CIRCUIT DIAGRAM



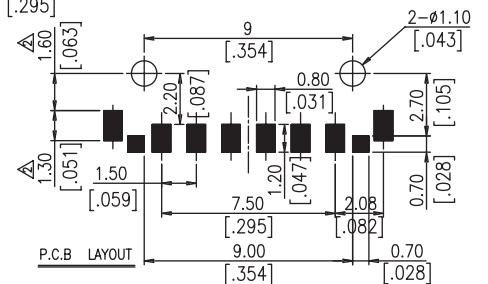
SPLSJ-GT



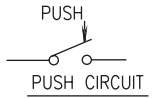
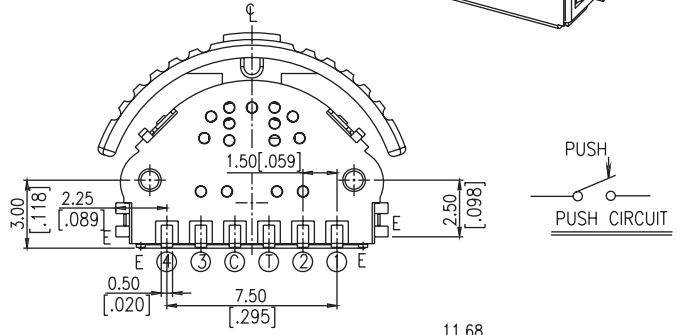
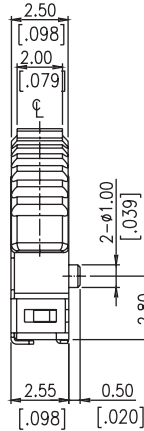
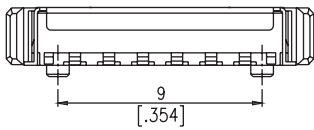
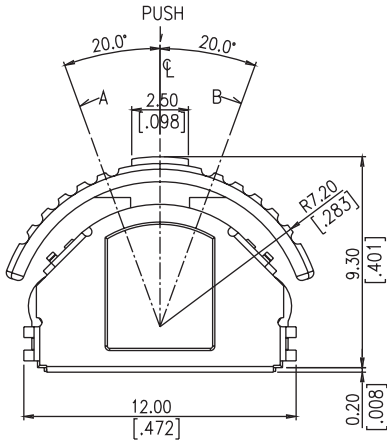
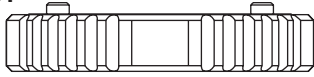
ANGLE	20°	A		B		20°
		(16°)	(8°)	(8°)	(16°)	
TERMINAL NO.						
①	■					
②	■					
③						■
④						■
C	■					■

* E : ERTHING TERMINAL
* ■ : ON POSITION

CIRCUIT DIAGRAM



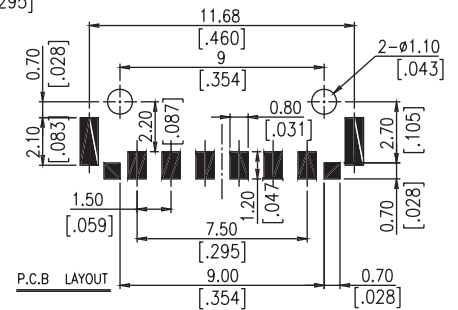
SPLSJ-GF



ANGLE	20°	A	(16°)	(8°)	(8°)	(16°)	20°
TERMINAL NO. ①		■					
②		■					
③						■	
④						■	
ⓐ							■

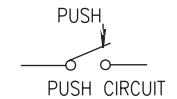
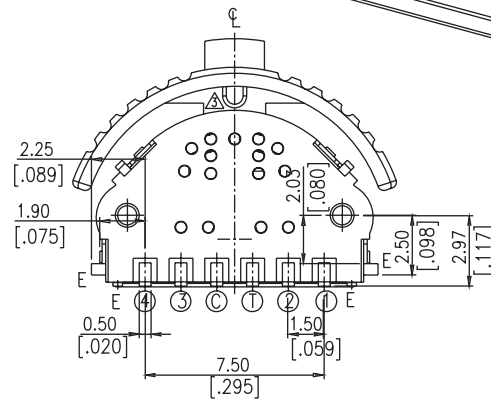
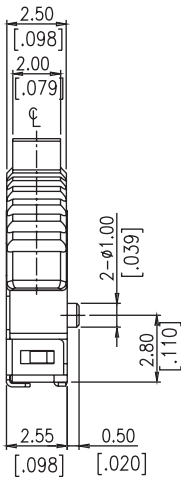
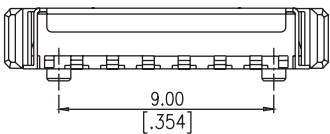
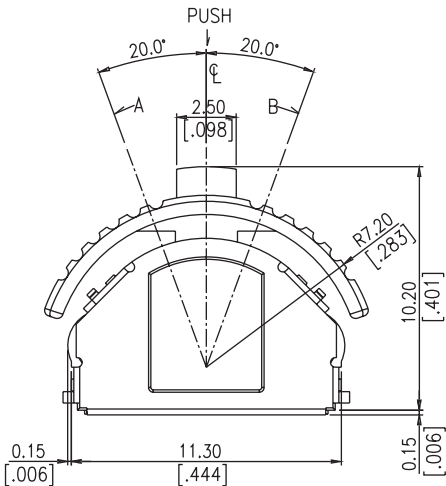
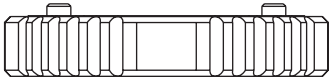
* E : ERTHING TERMINAL
* ■ : ON POSITION

CIRCUIT DIAGRAM



P.C.B LAYOUT

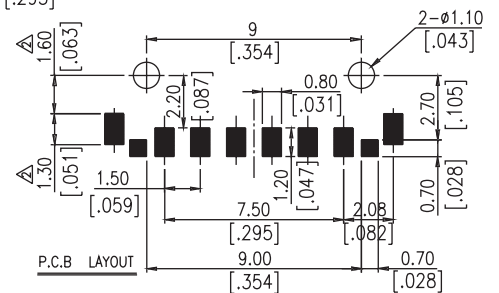
SPLSJ-GT□H



ANGLE	20°	A	(16°)	(8°)	(8°)	(16°)	20°
TERMINAL NO. ①		■					
②		■					
③						■	
④						■	
ⓐ							■

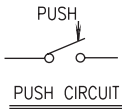
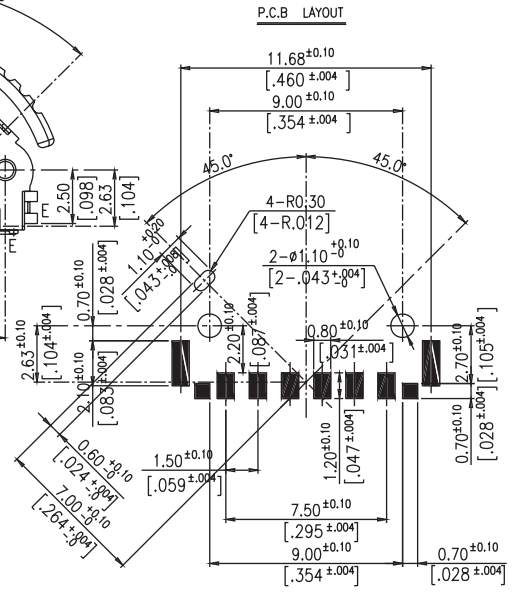
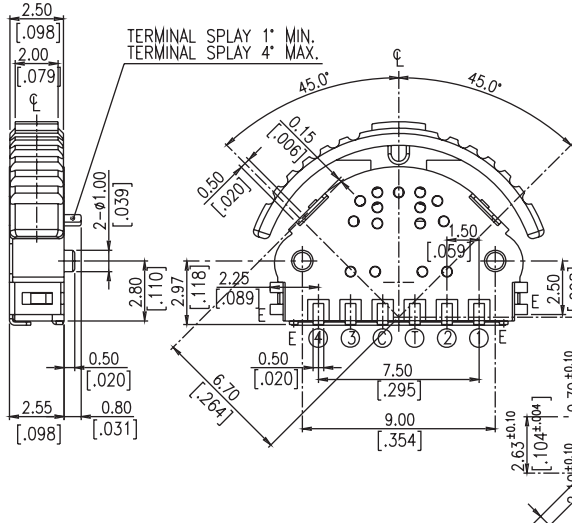
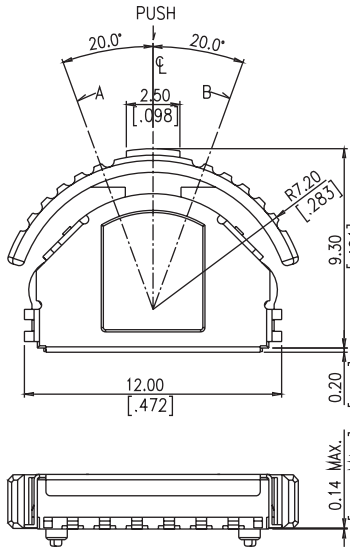
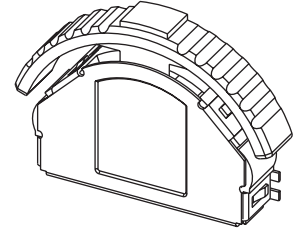
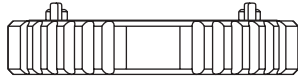
* E : ERTHING TERMINAL
* ■ : ON POSITION

CIRCUIT DIAGRAM



P.C.B LAYOUT

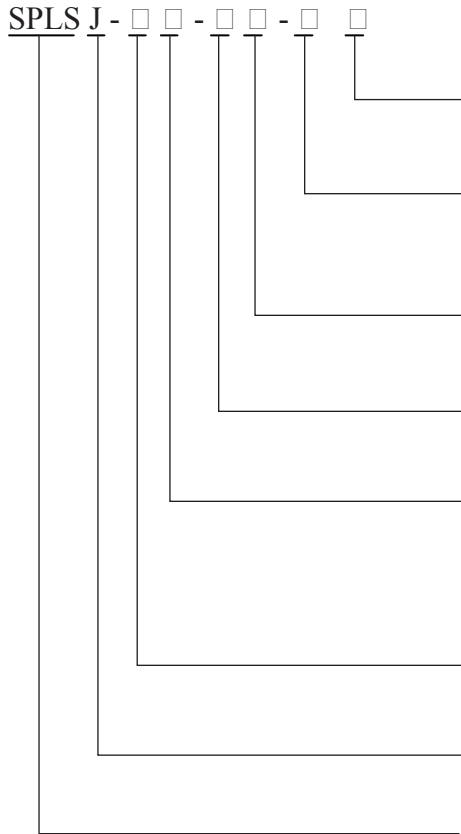
SPLSJ-GA



ANGLE	20°	A	(8°)	B	(16°)	20°
TERMINAL NO.						
①	■					
②	■					
③						■
④						■
Ⓢ	■	■	■	■	■	■

* E : ERTHING TERMINAL
 ■ : ON POSITION
 CIRCUIT DIAGRAM

HOW TO ORDER:



- Package:
- T/R = Tape & Reel
- Soldering:
- R = Lead Free
- H = High Actuator
- S = Standard
- G = Gray
- K = Black
- T = Two Ground Pins
- F = Four Ground Pins
- A = Alignment Pins
- G = Ground Terminals
- [] = Without Ground Terminals
- Termination Type:
- J = SMD J Bend Terminals
- Push & Lever Switch

ANGLE	A			B		
	20°	(16°)	(8°)	(8°)	(16°)	20°
TERMINAL NO.						
①	///	///				
②	///					
③						///
④				///	///	///
ⓐ	///	///	///	///	///	///

* E : ERTHING TERMINAL
* ■ : ON POSITION

CIRCUIT DIAGRAM

Soldering Process

- ▲ Hand Soldering: Use a soldering iron of 30 watts controlled at 350°C approximately 5 seconds while applying solder.
- ▲ Reflow Soldering: When applying reflow soldering the peak temperature of the reflow oven should be set to 260°C max.

△ Temperature Profile:

